



PVCu Tilt & Turn Windows Operation and Maintenance Guide

SWC Trade Frames Limited
Unit 1, The Gateway
Dunslow Road
Eastfield
Scarborough
YO11 3UT

Tel: 01723 582666
Fax: 01723 582667
Email: sales@swctradeframes.co.uk

Website: www.swctradeframes.co.uk

Issue 1: June 2015

General Information

- SWC Trade Frames Limited supply tilt & turn windows with high quality concealed tilt and turn gearing
- The tilt and turn window gearing should be maintained in accordance with these instructions. Periodic checks of the glass and weather seals should also be carried out.
- Keep these instructions in a safe place for future reference. Please ensure that all users are made aware of the contents of these instructions.

Operating Instructions

- Tilt and Turn windows are inward opening windows with two modes of operation.
- The window handle is placed in one of three positions, Closed, Tilt and Turn. The operation sequence commences with the window in the Closed position with the handle pointing downward).



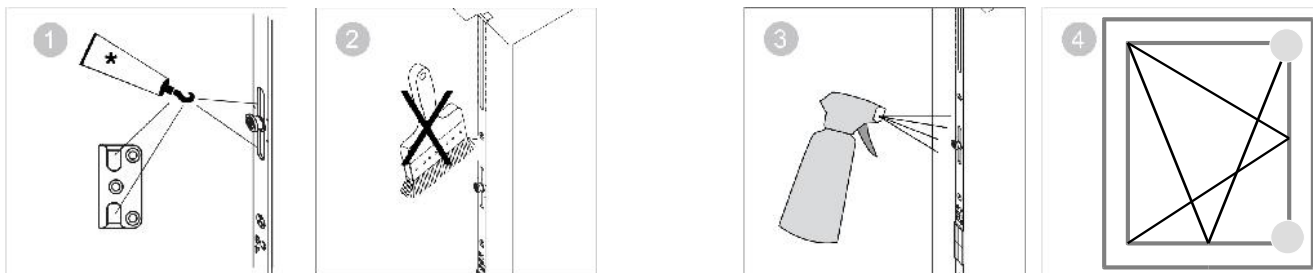
Turn: Position for cleaning and emergency exit. Do not leave this window unattended in this position.

Tilt: Position for ventilation.

Closed: This position should be used if room is to be unattended for a long period of time.

- NOTE: The window must always be fully closed before changing the handle position.

Maintenance Information



- 1 All moving parts and locking points of the tilt and turn gearing are to be greased.



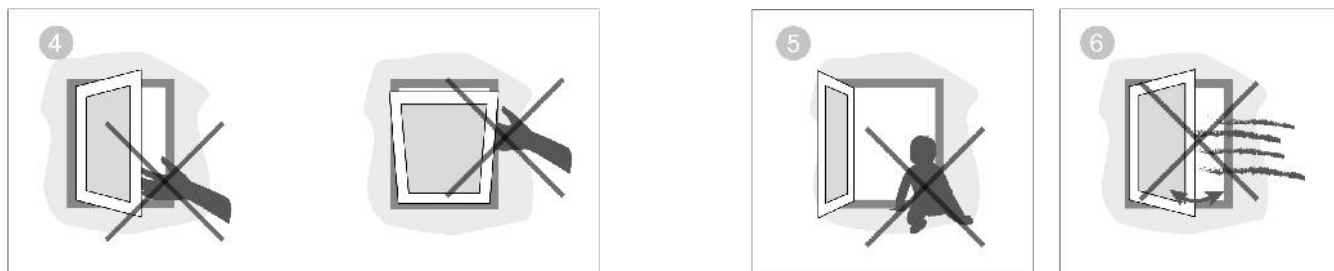
Avoid using penetrating lubrication oil, rust remover or silicone spray.

- 2 Do not paint over the gearing.
- 3 Clean the windows with water and a mild soap solution. Do not use caustic cleaning and maintenance agents as they will corrode the gearing.
- 4 The indicated gearing should be checked for wear and tear at regular intervals.

Safety Instructions



- 1 Do not subject the sashes to additional loads.
- 2 Do not press sashes up against the opening edge (window reveal).
- 3 Do not insert anything in the opening gap between sash and frame.



- 4 Risk of injury (e.g. catching a finger or other body part) in the opening gap between the sash and frame.
- 5 Risk of falling out.
- 6 Do not leave windows open in strong winds.